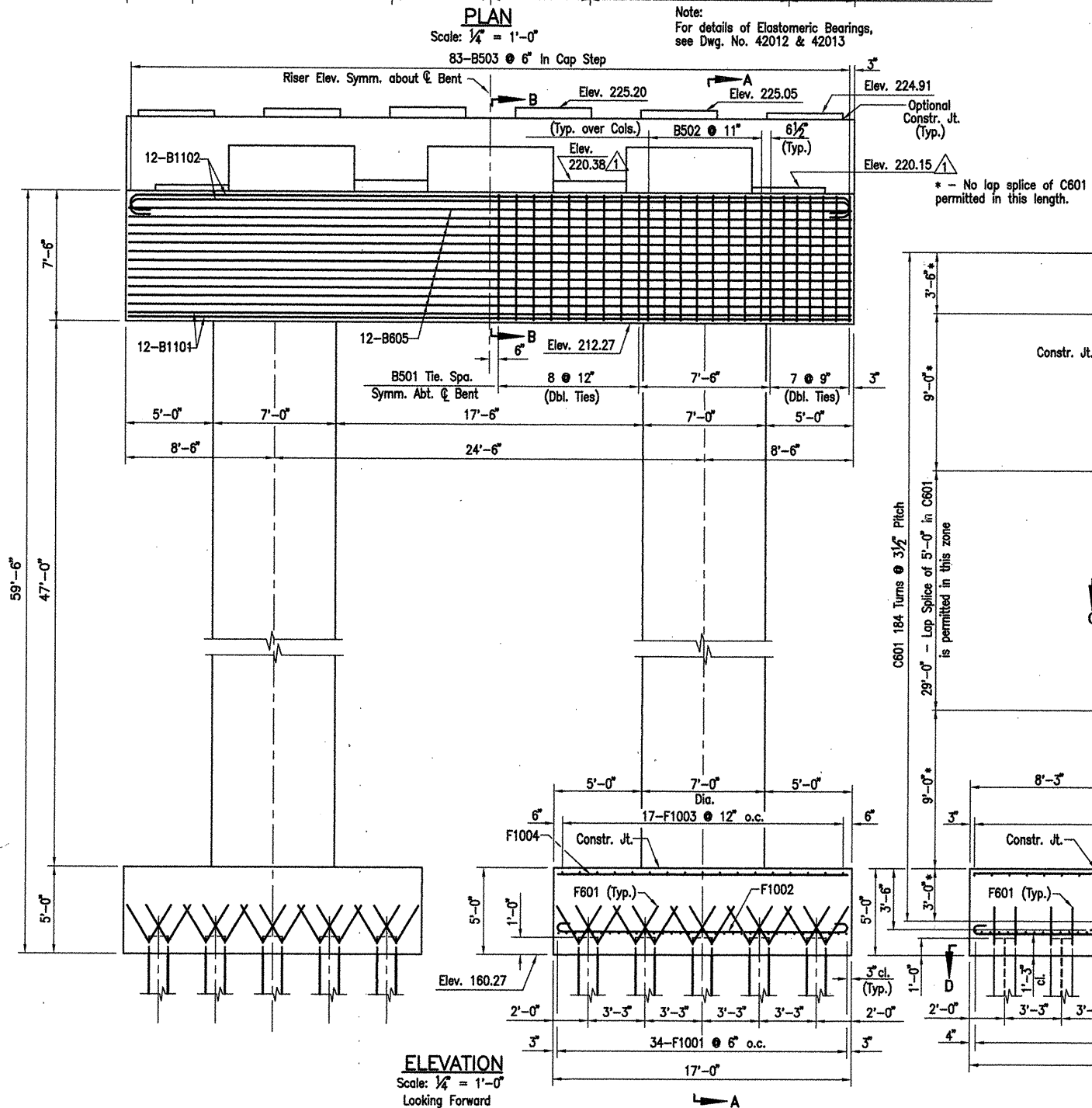
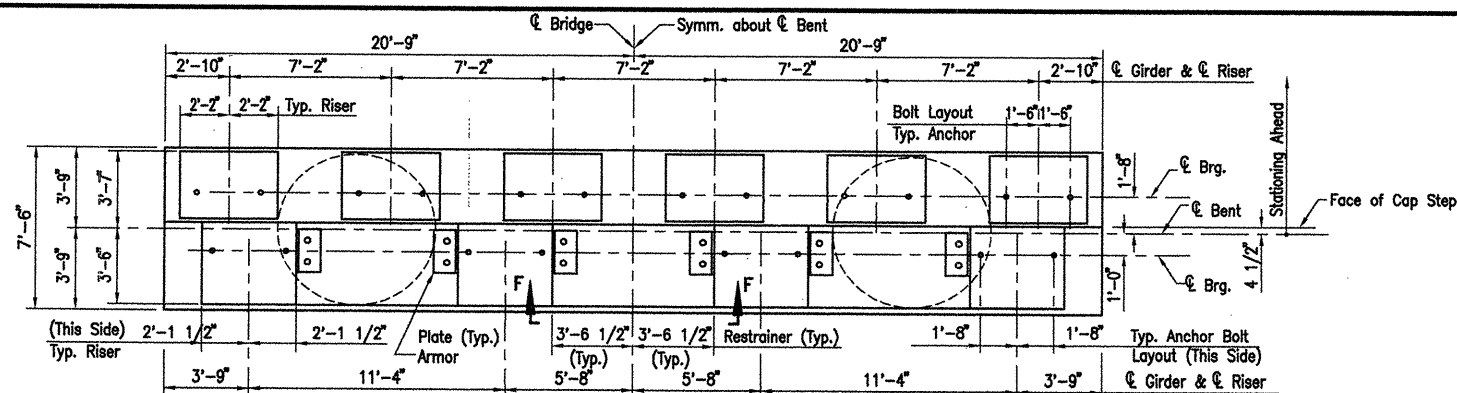


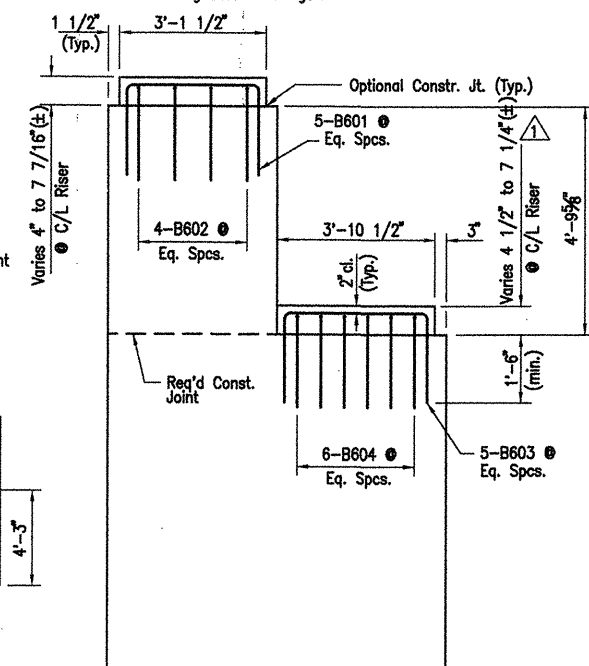
ACAD SCALE: 1/4" = 1'-0"

COMPANY\1999 JOBS\99-044 AHTD\WHITERIVER\JOB 110394\1dtbnt83at1

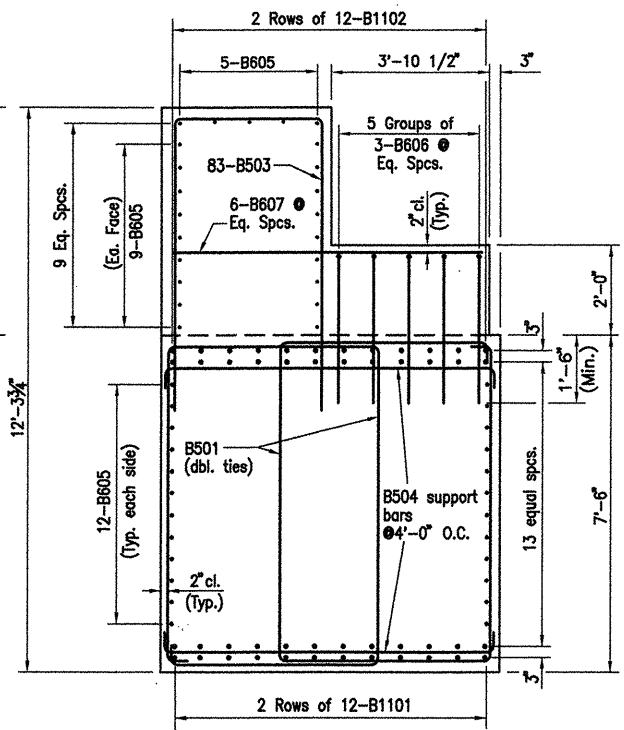
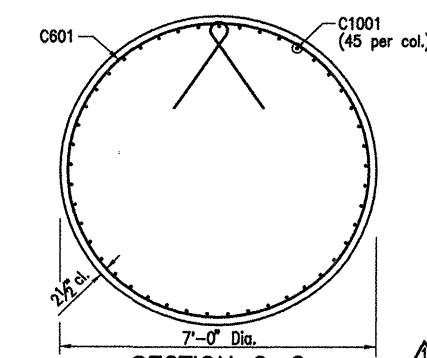


SECTION A-A
Scale: 1/4" = 1'-0"

The riser reinforcing steel shall be placed with the bent cap reinforcing steel. The Contractor has the option to drill and grout the riser reinforcing steel at least 1'-6" into the cap using an approved non-shrink grout or an epoxy grout listed in the QPL. Diameter of holes and installation procedure shall be as recommended by the grout manufacturer. Place bent reinforcing properly to avoid damage. This work shall be paid under "Reinforcing Steel - Bridge".



SECTION C-C
Scale: 1/2" = 1'-0"



SECTION B-B
Scale: 1/2" = 1'-0"

Note:
For Sections D-D and F-F, See Dwg. No. 41967.

Revised Elevations AHTD 06/03/10 GAE Checked by HJE/MM

ALTERNATE NO. 1
DETAILS OF BENTS - WHITE RIVER
BENT 83
(SHEET 1 OF 2)
WHITE RIVER STR. & APPRS.
(CLARENDON) (PH II) (F)
MONROE COUNTY
ROUTE 79 SEC. 13
ARIZONA STATE HIGHWAY COMMISSION
LITTLE ROCK, ARK.

Engstrom & Modjeski and Masters, Inc.

DRAWN BY: CJA DATE: Nov. 07 FILENAME: b1103941_b03
CHECKED BY: FS DATE: Nov. 01 SCALE: 1/4" = 1'-0"
DESIGNED BY: BMH DATE: Nov. 01
BRIDGE NO. 06830 DRAWING NO. 41966